

BEAUTIFUL LANDSCAPES START HERE!

ANSON NURSERY

Citrus County's Finest Garden & Nursery Center
PROUDLY SERVING THE COMMUNITY FOR OVER 20 YEARS

Come In Today And See All Of Our Beautiful Plants, Flowers & Trees.

Why Should You Come To Anson Nursery?

- Our staff takes the time to walk you through the nursery to get the plants you desire.
- Anson Nursery offers a **FREE** comprehensive landscape design.
- We offer delivery and planting for any plant in the nursery.
- Bring a picture of your area and we will help you find the right plant for your location.
- Beginner to expert - We will help you find what you need!
- Our plants are locally grown and meant for the Florida climate.

**Call us today at
352-628-4554**



**Monday-Friday: 9am-5pm
Saturday: 9am-4pm
5296 W. Homosassa Trail
Lecanto FL 34461
www.ansonnursery.net**



\$5 OFF

\$20 or more purchase
Excluding hard goods and citrus. Limit one offer per customer. May not be combined with other offers. Expires 11/15/18 VILL-CR

\$10 OFF

\$50 or more purchase
Excluding hard goods and citrus. Limit one offer per customer. May not be combined with other offers. Expires 11/15/18 VILL-CR

\$20 OFF

\$100 or more purchase
Excluding hard goods and citrus. Limit one offer per customer. May not be combined with other offers. Expires 11/15/18 VILL-CR

Fall Colors

By Jason Aguilar

We are approaching a great time of the year to start planting "Fall" color. Plants that have shades of Orange, Red and Yellow are usually great options to start with. These colors create a nice look at the entry points of your house and can give you the "Fall" look for the season. There are many different options to choose from at Anson Nursery. I will briefly talk about a few options what would work for you.

The first plants that come to mind are the Crotons. These have beautiful colored leaves that come in different shapes and sizes. These are a great option for Fall color. Crotons on average can grow three feet high and wide but can be kept lower with basic pruning. They will last up to the first frost and with proper protection can make it through the winter.



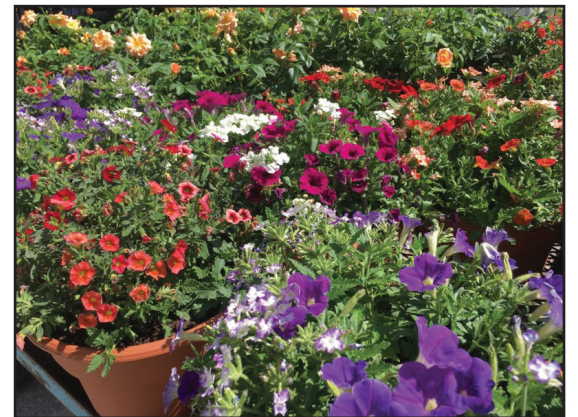
My second plant would be the Red Fountain Grass. This grass has reddish maroon foliage with beautiful Plumes. Growing around three feet tall, this grass makes a nice back drop behind lower color. Just like the Crotons, with proper protection can make it through the winter.

If you like the look of grasses, I would also suggest Muhly grass. This grass has a pinkish purple plume in the Fall and makes for a beautiful natural look. Muhly grass is hardy and drought tolerant once established and works well in mass plantings.

Another great option would be Cordyline "Ti Plant". The large leaf of this plant gives different texture options and growth habits to the overall layout of your Fall plantings. Cordyline can be kept around three to four feet tall and is fairly low maintenance.

If you're looking for a smaller plant option for Fall color, I would recommend Gerbera Daisies. These low growing plants come in a wide range of colors. Gerbera Daisies have large flowers and makes for a colorful area once planted.

Now these are just a few plants that were mentioned, here at Anson Nursery we have other great options to pick and choose from. By simply adding a few colorful plants to the front of your house,



will change the look and will be more festive for the Fall season.

We encourage you to come out and walk the isles of our beautiful nursery. You will be greeted by a friendly staff that will be eager to help you.

